

NEVER!

Compare these sentences:

I **have never used** a computer.

I **never use** computers.

What is the difference?

I **have never used** a computer.

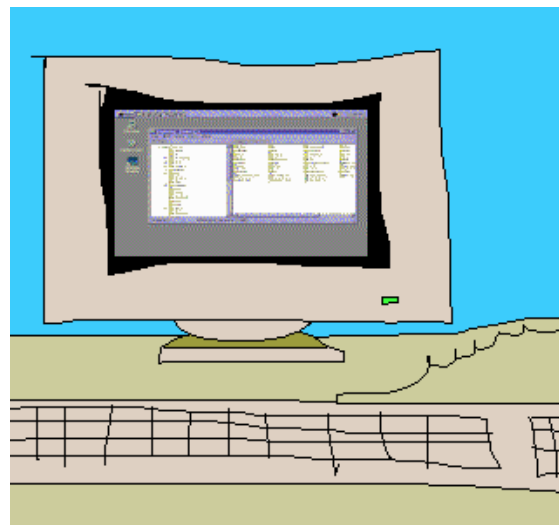
= In my life, I did not ever use a computer.

= I have no experience with computers.

I **never use** computers.

= Recently, I don't use computers.

= I may have experience with computers in the past.



NOTE: When people say “I never...”, it may not be completely true! For example,

I **never go** to Waikiki.

This means, “I sometimes go to Waikiki, but not often.”

Choose the correct responses.

1. The view from Diamond Head is beautiful.

- a) Really? I have never been there.
- b) Really? I never go there.

2. I love watching hula!

- a) Will you show me? I've never seen hula.
- b) Will you show me? I never see hula.

3. Waikiki is so crowded these days.

- a) Really? I have never been there.
- b) Really? I never go there.

4. Do you play tennis often?

- a) No, I never play. I hate tennis.
- b) No, I have never played. I hate tennis.

5. Why isn't Pete smiling?

- a) I don't know. He never smiles.
- b) I don't know. He has never smiled.

